

SYSTEM DATA SHEET

Sikafloor® DecoDur EM-21 Compact

HIGHLY MECHANICAL RESISTANT, POWER FLOAT FINISHED, COLOURED QUARTZ FLOOR COVERING

DESCRIPTION

Sikafloor® DecoDur EM-21 Compact is a highly mechanical resistant, decorative, coloured, smooth, low VOC, floor covering designed for indoor applications.

USES

Sikafloor® DecoDur EM-21 Compact may only be used by experienced professionals.

- Industrial (e.g. Manufacturing)
- Transportation (e.g. Airports)
- Retail (e.g. Shopping Malls)

CHARACTERISTICS / ADVANTAGES

- Very good mechanical and abrasion resistance
- Decorative
- Low VOC-content

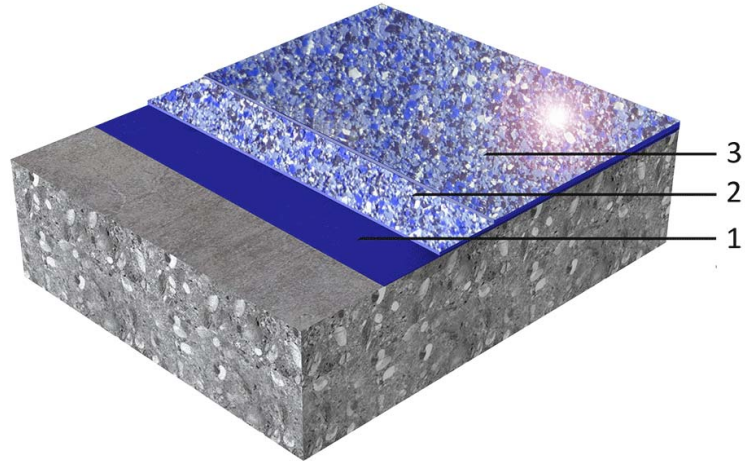
APPROVALS / CERTIFICATES

- Particle emission certificate Sikafloor® DecoDur EM-21 Compact CSM Statement of Qualification Report GMP A- No. SI 1008-533 (system tested with Sikafloor®-169 as a top coat)
- Biological resistance certificate Sikafloor® DecoDur EM-21 Compact CSM Statement of Qualification – ISO 846, very good - Report No. SI 1008-533 (system tested with Sikafloor®-169 as a top coat)
- Fire classification of Sikafloor® DecoDur EM-21 Compact in accordance with EN 13501-1, classification report-No. 2010-1878-K1, Exova Brandhaus, Germany, August 2010 (system tested with Sikafloor®-304 W as a top coat)

SYSTEMS

System Structure

Sikafloor® DecoDur EM-21 Compact system

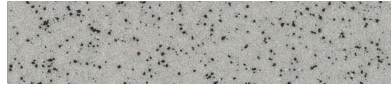


Product	Layer
1. Primer	Sikafloor®-150, 151 or 169 slightly broadcasted with Sika®-PU Quartz CF 0.3–1.2mm
2. Wearing coat Broadcast Power floating	Slurry of 1 pbw Sikafloor®-169 + 1 pbw Sikafloor®-Compact Filler broadcast to saturation with Sika®-PU Quartz CF 0.3–1.2mm
Seal coat	Sikafloor®-169
3. Top coat	Sikafloor®-304 W (mat finish)
Alternative top coat 1 :	Sikafloor®-316 with highly scratch resistance properties
Alternative top coat 2 :	Sikafloor®-169 with Extender T (glossy orange peel finish)

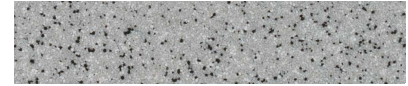
Composition	Epoxy
Appearance	Matt or glossy orange peel finish possible

Colour

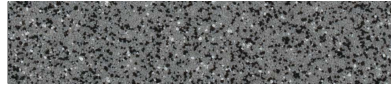
Iceberg:



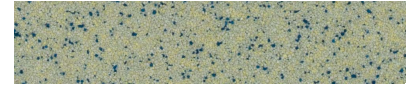
Hiero:



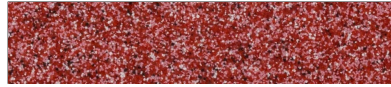
Noblesse:



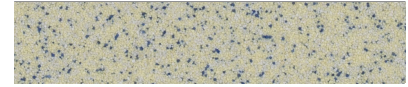
Amande:



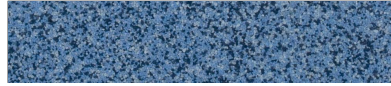
Framboise:



Fleur De Tilleul:



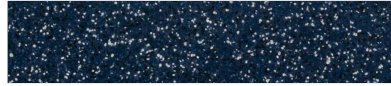
Blue Jean:



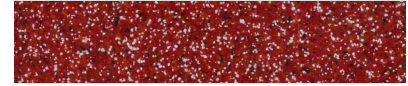
Nougat:



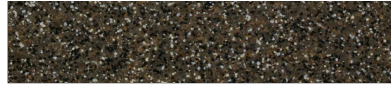
Mer Du Nord:



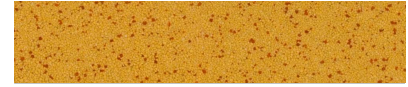
Bordeaux:



Granit:



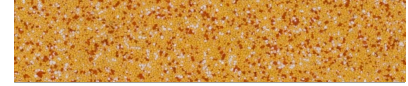
Peche:



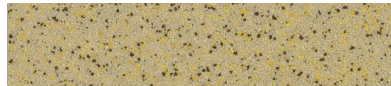
Dune:



Sanguine:



Sable:



Nominal Thickness	~2–3mm
-------------------	--------

TECHNICAL INFORMATION

Reaction to Fire	Bfl-S1	(DIN EN 13501-1)
------------------	--------	------------------

Chemical Resistance	Resistant to many chemicals. Contact Sika technical service for specific information.	
---------------------	---	--

Skid / Slip Resistance	R9	(DIN 51130)
------------------------	----	-------------

APPLICATION INFORMATION

Consumption		
Sikafloor® DecoDur EM-21 Compact system		
Coating System	Product	Consumption
Primer	1–2 × Sikafloor®-150, 151 or 169	1–2 × ~0.3–0.5 kg/m ²
Broadcast	Slightly broadcast with Sika-PU Quartz CF 0.3–1.2mm	~1.0 kg/m ²
Wearing coat	Slurry made of 1 pbw Sikafloor®-169 + 1 pbw Sikafloor®-Compact Filler	~1.5–1.7 kg/m ²
Broadcast	Broadcast to saturation with Sika®-PU Quartz CF 0.3-1.2mm	~3.0–4.0 kg/m ²
Powerfloating		~0.25–0.3 kg/m ²
Seal coat	1 × Sikafloor®-169 (after removing the upstanding not fully embedded Sika-PU Quartz CF 0.3-1.2mm with a steel trowel and vacuuming of the surface)	
Top coat (option1)	1 × Sikafloor®-316 + 2 % Antiskid Agent (gloss finish)*	~0.07–0.08 kg/m ²
Top coat (option2)	1 × Sikafloor®-304 W (Matt finish)*	~0.15 kg/m ²
Top coat (option3)	1 × Sikafloor®-169 (Glossy orange peel finish)	~0.15 kg/m ²

* Before applying Sikafloor®-304 W or Sikafloor®-316 please refer to the individual product data sheets

Product Temperature	Please refer to the individual Product Data Sheets	
Ambient Air Temperature	+10 °C min. / +30 °C max.	
Relative Air Humidity	80 % r.h. max.	
Dew Point	Beware of condensation! The substrate and uncured floor must be at least 3 °C above dew point to reduce the risk of condensation or blooming on the floor finish.	
Substrate Temperature	+10 °C min. / +30 °C max.	
Substrate Moisture Content	When performing application work with Sikafloor® DecoDur EM-21 Compact, the substrate moisture content must not exceed 4 % pbw measured by Tramex. Test method: Sika®-Tramex meter, CM - measurement or Oven-dry-method. No rising moisture according to ASTM (Polyethylene-sheet).	
Waiting Time / Overcoating	Before applying Sikafloor®-169 on Sikafloor®-150/ -151/ -264/-169 allow:	
	Substrate temperature	Minimum Maximum
	+10 °C	36 hours 4 days
	+20 °C	12 hours 2 days
	+30 °C	8 hours 1 day

Before applying Sikafloor®-304 W on Sikafloor®-169 allow:

Substrate temperature	Minimum	Maximum
+10 °C	45 hours	4 days
+20 °C	36 hours	3 days
+30 °C	24 hours	2 days

Before applying Sikafloor®-316 on Sikafloor®-169 allow:

Before applying Sikafloor®-316 on Sikafloor® epoxies, the surface has to be treated with a green Scotch-Brite™ pad to remove contaminations or be cleaned professionally with Kärcher RM 776 or Veroclean.

Substrate temperature	Minimum	Maximum
+10 °C	30 hours	4 days
+20 °C	24 hours	3 days
+30 °C	16 hours	2 days

Times are approximate and will be affected by changing ambient conditions particularly temperature and relative humidity.

Applied Product Ready for Use

Sikafloor®-169

Temperature	Foot traffic	Light traffic	Full cure
+10 °C	~ 48 hours	~ 6 days	~ 10 days
+20 °C	~ 30 hours	~ 4 days	~ 7 days
+30 °C	~ 20 hours	~ 3 days	~ 5 days

Sikafloor®-316

Temperature	Foot traffic	Light traffic	Full cure
+10 °C	~ 20 hours	~ 48 hours	~ 10 days
+20 °C	~ 16 hours	~ 36 hours	~ 7 days
+30 °C	~ 12 hours	~ 24 hours	~ 5 days

Sikafloor®-304 W

Temperature	Foot traffic	Light traffic	Full cure
+10 °C	~ 30 hours	~ 48 hours	~ 6 days
+20 °C	~ 16 hours	~ 24 hours	~ 4 days
+30 °C	~ 12 hours	~ 18 hours	~ 3 days

PRODUCT INFORMATION

Packaging	Please refer to the individual Product Data Sheets
Shelf life	Please refer to the individual Product Data Sheets
Storage conditions	Please refer to the individual Product Data Sheets

MAINTENANCE

CLEANING

Please refer to the Method Statement Sikafloor®-Cleaning Regime

- Sika® Method Statement Evaluation and Preparation of Surfaces for Flooring systems
- Sika® Method Statement Sikafloor® DecoDur EM-21 Compact

IMPORTANT CONSIDERATIONS

- Do not apply Sikafloor® DecoDur EM-21 Compact on substrates with rising moisture.
- Freshly applied Sikafloor® DecoDur EM-21 Compact must be protected from damp, condensation and water for at least 24 hours.

FURTHER INFORMATION

- Sika® Method Statement Mixing & Applications of Flooring systems

- The incorrect assessment and treatment of cracks may lead to a reduced service life and reflective cracking.
- For exact colour matching, ensure that all the products in each area are applied from the same control batch numbers.
- Under certain conditions, underfloor heating or high ambient temperatures combined with high point loading, may lead to imprints in the resin.
- If heating is required do not use gas, oil, paraffin or other fossil fuel heaters, these produce large quantities of both CO₂ and H₂O water vapour, which may adversely affect the finish. For heating use only electric powered warm air blower systems.

BASIS OF PRODUCT DATA

All technical data stated in this Product Data Sheet are based on laboratory tests. Actual measured data may vary due to circumstances beyond our control.

LOCAL RESTRICTIONS

Please note that as a result of specific local regulations the declared data for this product may vary from country to country. Please consult the local Product Data Sheet for the exact product data.

ECOLOGY, HEALTH AND SAFETY

For information and advice on the safe handling, storage and disposal of chemical products, users shall refer to the most recent Safety Data Sheet (SDS) containing physical, ecological, toxicological and other safety-related data.

LEGAL NOTES

Any information or suggestions for use concerning Sika's products, which we either in writing or orally have given buyers or end-users of the product, have been given in good faith based on our own experiences and based on approved praxis and the technological and scientific knowledge on the time of giving such suggestions and information, which are given without any type of guarantees, and which do not lead to any further responsibility from Sika Danmark A/S, besides what is stated in the sales agreement in question. The buyer or end-user should themselves investigate or otherwise make sure, that our products are suitable for the use in question and further make sure that the products are kept and used correct and in agreement with the published rules and considering the actual conditions in order to avoid damages or less satisfactory results. Any order is accepted and any deliverance is affected according to the general terms of sales and delivery from Sika Danmark A/S, which are considered known and accepted, and which could be handed out when asked for. Our catalogues are not up-dated automatically. The present product data sheet is only for use in Denmark. Values stated in the present product data sheet should be seen as recommended, unless stated otherwise.

Sika Danmark A/S
 Hirsemærken 5
 3520 Farum
 Tlf. +45 48 18 85 85
 www.sika.dk



SYSTEM DATA SHEET
 Sikafloor® DecoDur EM-21 Compact
 March 2020, Version 02.01
 02081190000000020

SikafloorDecoDurEM-21Compact-en-DK-(03-2020)-2-1.pdf