

# Sikacryl-625 Fire+

## DECLARATION OF PERFORMANCE No. 73598989

1	<b>UNIQUE IDENTIFICATION CODE OF THE PRODUCT-TYPE:</b>	73598989
2	<b>INTENDED USE/S</b>	EAD 350141-00-1106:2017 Fire Stopping and Sealing Product: • Linear Joint and Gap Seals
3	<b>MANUFACTURER:</b>	Sika Services AG Tüffenwies 16-22 8064 Zürich
4	<b>AUTHORISED REPRESENTATIVE:</b>	-
5	<b>SYSTEM/S OF AVCP:</b>	System 1
6b	<b>EUROPEAN ASSESSMENT DOCUMENT:</b>	EAD 350141-00-1106:2017
	European Technical Assessment:	ETA-21/1034 of 2021/11/24
	Technical Assessment Body:	ETA-Danmark A/S
	Notified body/ies:	2531

## 7 DECLARED PERFORMANCE/S

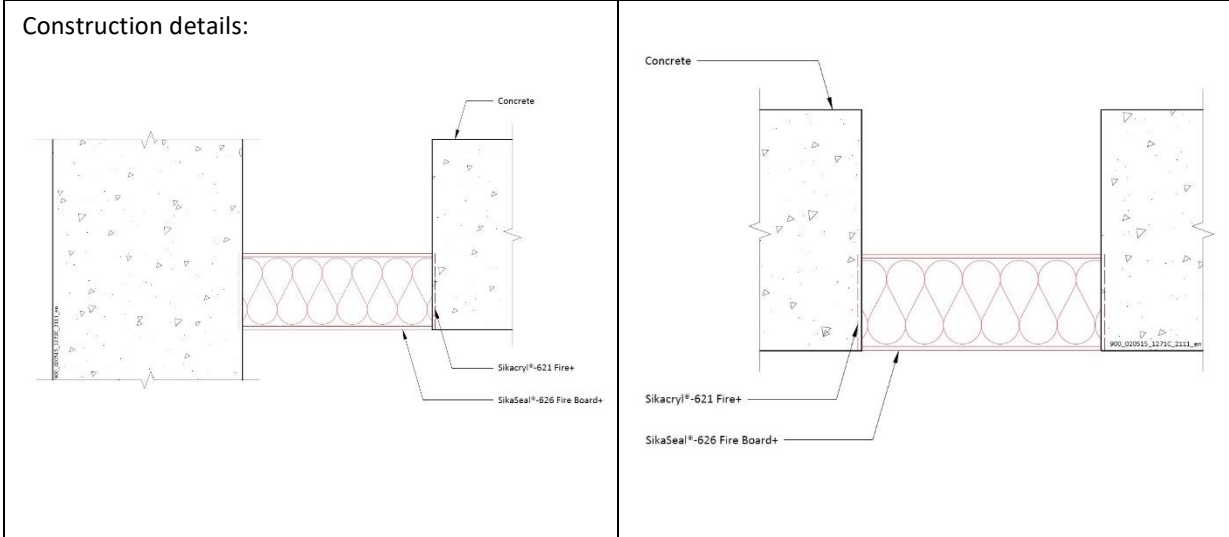
Essential Characteristics	Performance	AVCP	Harmonised Technical Specification
Reaction to fire	NPD	System 1	EAD 350141-00-1106:2017
Resistance to fire	Annex A	System 1	
Air permeability (material property)	NPD	System 1	
Water permeability (material property)	NPD	System 1	
Release of dangerous substances	NPD	System 1	
Mechanical resistance and stability	NPD	System 1	
Resistance to impact/movement	NPD	System 1	
Adhesion	NPD	System 1	
Airborne sound insulation - Sikacryl-625 Fire+ 1.0mm WFT on both sides of minimum 50mm thick stone wool mineral fibre board with density minimum 160kg/m3	Rw (C;Ctr) = 55 (-1;-1) dB	System 1	
Impact sound insulation	NPD	System 1	
Thermal properties	NPD		
Water vapour permeability	NPD		
Durability	Z <sub>2</sub>		

## ANNEX A – RESISTANCE TO FIRE CLASSIFICATION – SIKACRYL-625 FIRE+

### A.1 Rigid floor constructions with thickness of minimum 150 mm

#### A.1.1 Linear joint or gap seal, between floor slabs or between floor slab and wall with coating to the both faces of seal

**Joint Seal:** 60mm thick SikaSeal-626 Fire Board+ 60 2-S friction fitted at any position fully within the cavity\* and sealed at the joint and along the top and bottom edges with FR Acrylic

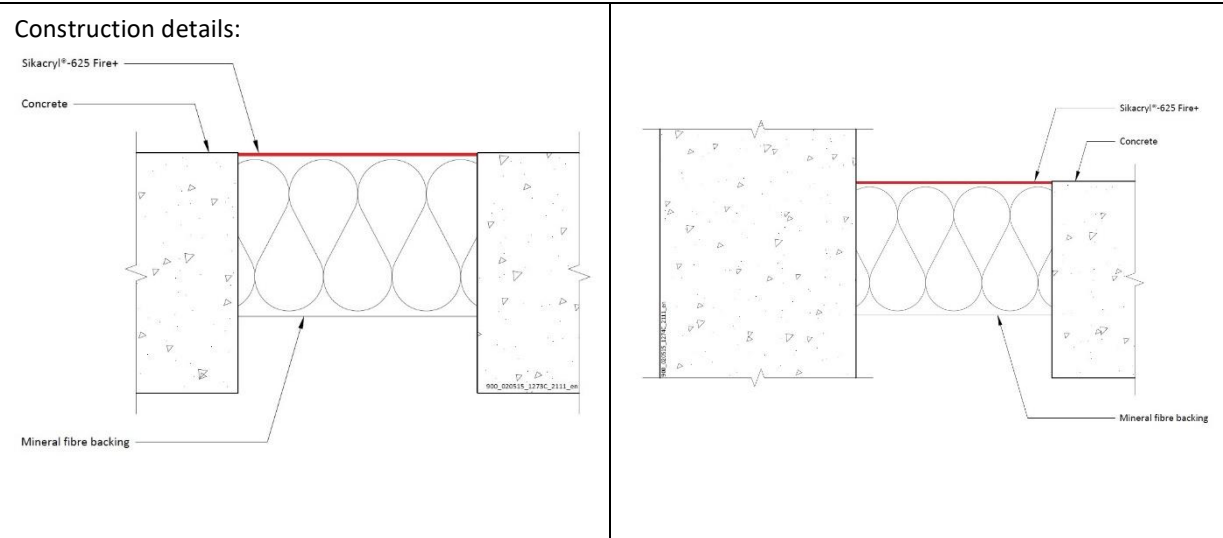


#### A.1.1.1

Substrate	Depth (mm)	Backing	Classification
masonry/ concrete	1 mm WFT min. Both sides	60 mm stone wool, mineral fibre batt	E 240 – H – X – F – W30-120 EI 120 – H – X – F – W30-120

**A.1.2 Linear joint or gap seal, between floor slabs or between floor slab and wall with coating to the top face of seal only**

**Joint Seal:** 100mm thick Stone wool, mineral fibre insulation friction fitted at least 50 mm above the soffit and coated on the top face with Sikacryl-625 Fire+

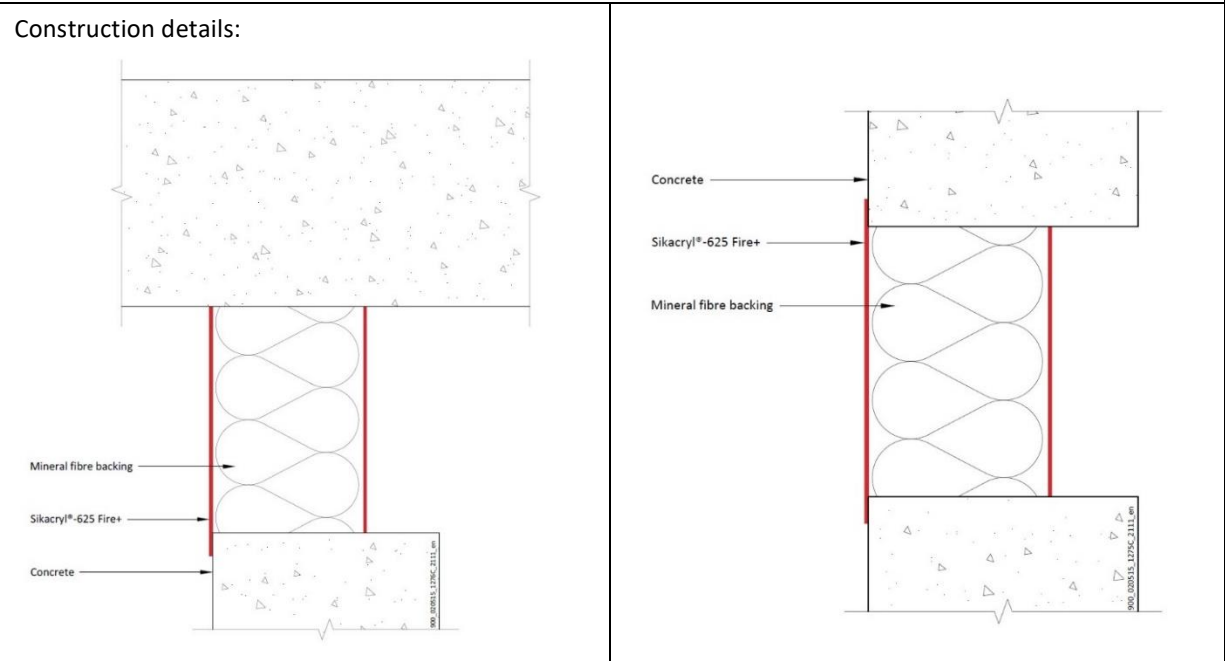


**A.1.2.1**

Substrate	Depth (mm)	Backing	Classification
masonry/ concrete	1 mm WFT min. top face	100 mm stone wool, mineral fibre min. 33 kg/m <sup>3</sup>	<b>E 240 – H – X – F – W120</b> <b>EI 180 – H – X – F – W120</b>

**A.1.3 Linear joint or gap seal, between the head of walls (min. 150 mm thick) and the soffit of floor slabs or in walls (min. 150 mm thick) with coating to both faces**

**Joint Seal:** 100mm thick Stone wool, mineral fibre insulation compression fitted to either face of the wall or at any position in between and coated on both faces with Sikacryl-625 Fire+



**A.1.3.1**

Substrate	Depth (mm)	Backing	Classification
masonry/ concrete	1.2 mm WFT min. both faces overlapped by 15 mm onto wall surface	100 mm stone wool, mineral fibre min. 35 kg/m <sup>3</sup> , compressed into gap by 40%	<b>E 240 – T – X – F – W120</b> <b>EI 180 – T – X – F – W120</b>

**8 APPROPRIATE TECHNICAL DOCUMENTATION AND/OR -  
SPECIFIC TECHNICAL DOCUMENTATION**

The performance of the product identified above is in conformity with the set of declared performance/s. This declaration of performance is issued, in accordance with Regulation (EU) No 305/2011, under the sole responsibility of the manufacturer identified above.

Signed for and on behalf of the manufacturer by:


Name: Anders Beier  
Function: General Manager  
At Farum on 3 May 2022

Name: Stan Petersen  
Function: Head Distribution  
At Farum on 3 May 2022



End of information as required by Regulation (EU) No 305/2011

**FULL CE MARK**


21
Sika Services AG, Zurich, Switzerland
73598989
Resistance to fire – Annex A
Airborne sound insulation - Sikacryl-625 Fire+ 1.0mm WFT on both sides of minimum 50mm thick stone wool mineral fibre board with density minimum 160kg/m <sup>3</sup> - Rw (C;Ctr) = 55 (-1;-1) dB
Durability and serviceability Z <sub>2</sub>

**ANNEX A – RESISTANCE TO FIRE CLASSIFICATION – SIKACRYL-625 FIRE+**

**A.1 Rigid floor constructions with thickness of minimum 150 mm**

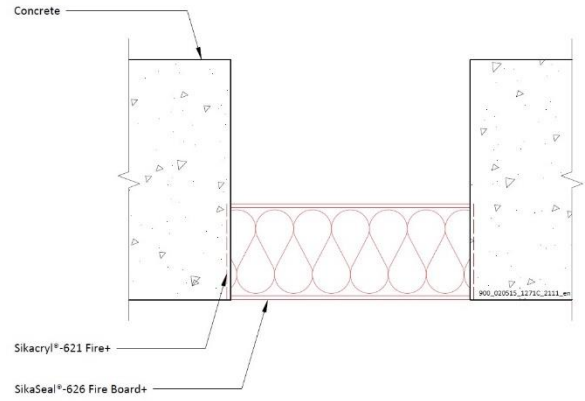
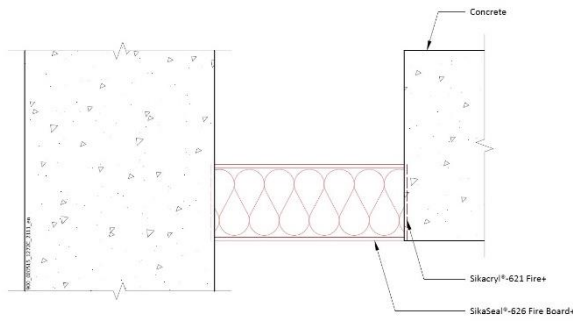
**A.1.1 Linear joint or gap seal, between floor slabs or between floor slab and wall with coating to the both faces of seal**

**Joint Seal:** 60mm thick SikaSeal-626 Fire Board+ 60 2-S friction fitted at any position fully within the cavity\* and sealed at the joint and along the top and bottom edges with FR Acrylic

**Declaration of Performance**  
Sikacryl-625 Fire+  
73598989  
2021.12 , ver. 1  
1549

Template for translation. Only for  
internal use

Construction details:



A.1.1.1

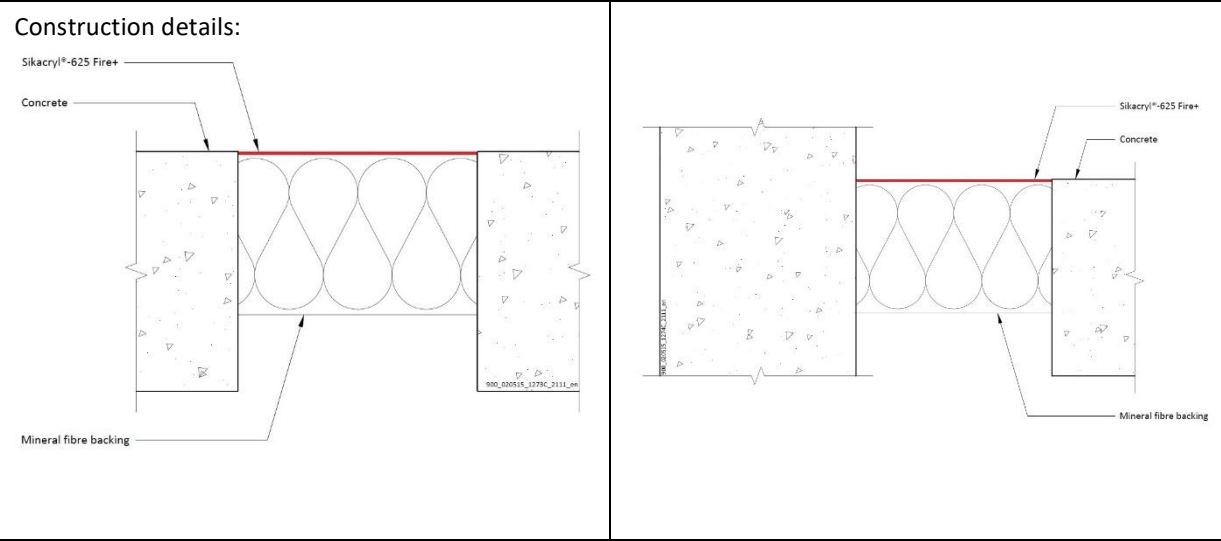
Substrate	Depth (mm)	Backing	Classification
masonry/ concrete	1 mm WFT min. Both sides	60 mm stone wool, mineral fibre batt	<b>E 240 – H – X – F – W30-120</b> <b>EI 120 – H – X – F – W30-120</b>

**Declaration of Performance**  
Sikacryl-625 Fire+  
73598989  
2021.12 , ver. 1  
1549

Template for translation. Only for  
internal use

**A.1.2 Linear joint or gap seal, between floor slabs or between floor slab and wall with coating to the top face of seal only**

**Joint Seal:** 100mm thick Stone wool, mineral fibre insulation friction fitted at least 50 mm above the soffit and coated on the top face with Sikacryl-625 Fire+



**A.1.2.1**

Substrate	Depth (mm)	Backing	Classification
masonry/ concrete	1 mm WFT min. top face	100 mm stone wool, mineral fibre min. 33 kg/m <sup>3</sup>	<b>E 240 – H – X – F – W120</b> <b>EI 180 – H – X – F – W120</b>

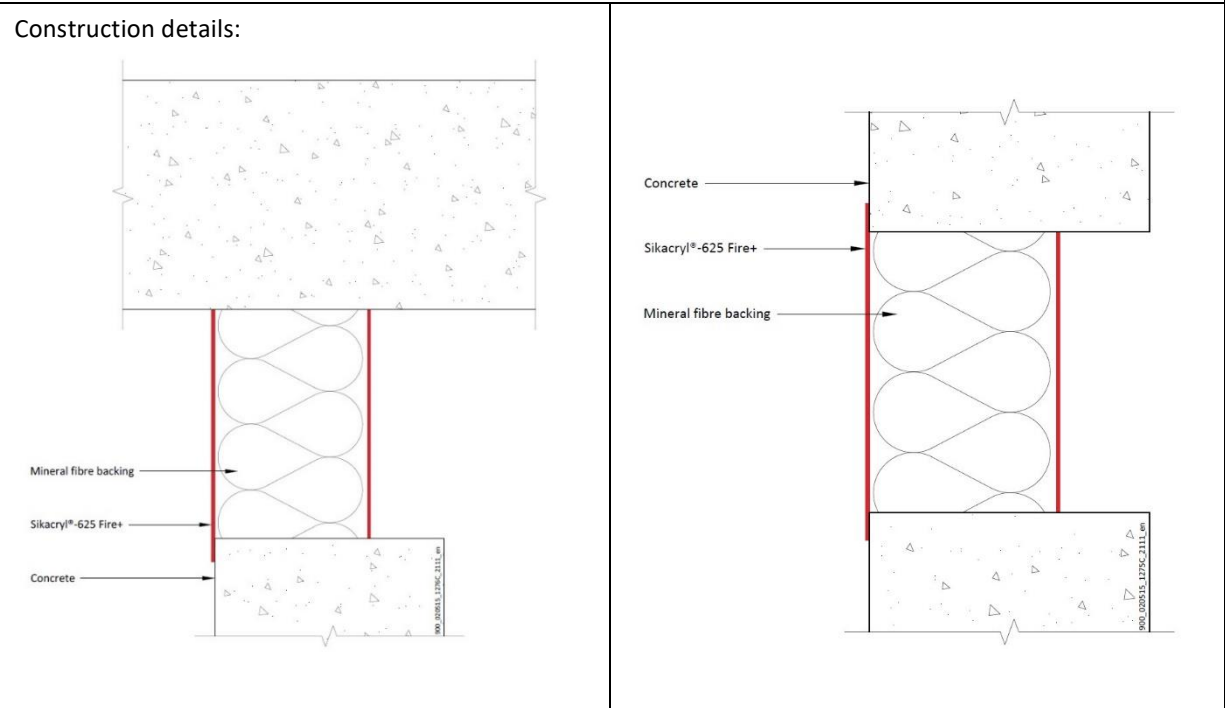
**Declaration of Performance**  
Sikacryl-625 Fire+  
73598989  
2021.12 , ver. 1  
1549

Template for translation. Only for  
internal use



**A.1.3 Linear joint or gap seal, between the head of walls (min. 150 mm thick) and the soffit of floor slabs or in walls (min. 150 mm thick) with coating to both faces**

**Joint Seal:** 100mm thick Stone wool, mineral fibre insulation compression fitted to either face of the wall or at any position in between and coated on both faces with Sikacryl-625 Fire+



**A.1.3.1**

Substrate	Depth (mm)	Backing	Classification
masonry/ concrete	1.2 mm WFT min. both faces overlapped by 15 mm onto wall surface	100 mm stone wool, mineral fibre min. 35 kg/m <sup>3</sup> , compressed into gap by 40%	<b>E 240 – T – X – F – W120</b> <b>EI 180 – T – X – F – W120</b>


EAD 350141-00-1106:2017
Notified Body 2531
Fire Stopping and Sealing Product: • Linear Joint and Gap Seals

<http://dop.sika.com>

**Declaration of Performance**  
Sikacryl-625 Fire+  
73598989  
2021.12 , ver. 1  
1549

Template for translation. Only for  
internal use

CE mark to be placed on the label

 21
Sika Services AG, Zurich, Switzerland
73598989
For details see accompanying documents
EAD 350141-00-1106:2017
Notified Body 2531
Fire Stopping and Sealing Product: Linear Joint and Gap Seals <a href="http://dop.sika.com">http://dop.sika.com</a>

**Declaration of Performance**  
Sikacryl-625 Fire+  
73598989  
2021.12 , ver. 1  
1549

10/11

Template for translation. Only for  
internal use

**BUILDING TRUST**



---

## ECOLOGY, HEALTH AND SAFETY INFORMATION (REACH)

For information and advice on the safe handling, storage and disposal of chemical products, users shall refer to the most recent Safety Data Sheet (SDS) containing physical, ecological, toxicological and other safety related data.

---

### LEGAL NOTE

Any information or suggestions for use concerning Sika's products, which we either in writing or orally have given buyers or end-users of the product have been given in good faith based on our own experiences and based on approved praxis and the technological and scientific knowledge on the time of giving such suggestions and information, which are given without any type of guarantees, and which do not lead to any further responsibility from Sika Danmark A/S, besides what is stated in the sales agreement in question. The buyer or end-user should themselves investigate or otherwise make sure that our products are suitable for the use in question and further make sure that the products are kept and used correct and in agreement with the published rules and considering the actual conditions in order to avoid damages or less satisfactory results. Any order is accepted and any deliverance is effected according to the general terms of sales and delivery from Sika Danmark A/S, which are considered known and accepted, and which could be handed out when asked for. Our catalogues are not up-dated automatically. The present product data sheet is only for use in Denmark. Values stated in the present product data sheet should be seen as recommended, unless stated otherwise.

---

**Sika Danmark A/S**  
Hirsemarken 5  
DK-3520 Farum  
Denmark  
[www.sika.dk](http://www.sika.dk)

**Declaration of Performance**  
Sikacryl-625 Fire+  
73598989  
2021.12 , ver. 1  
1549

11/11

Template for translation. Only for  
internal use

**BUILDING TRUST**

